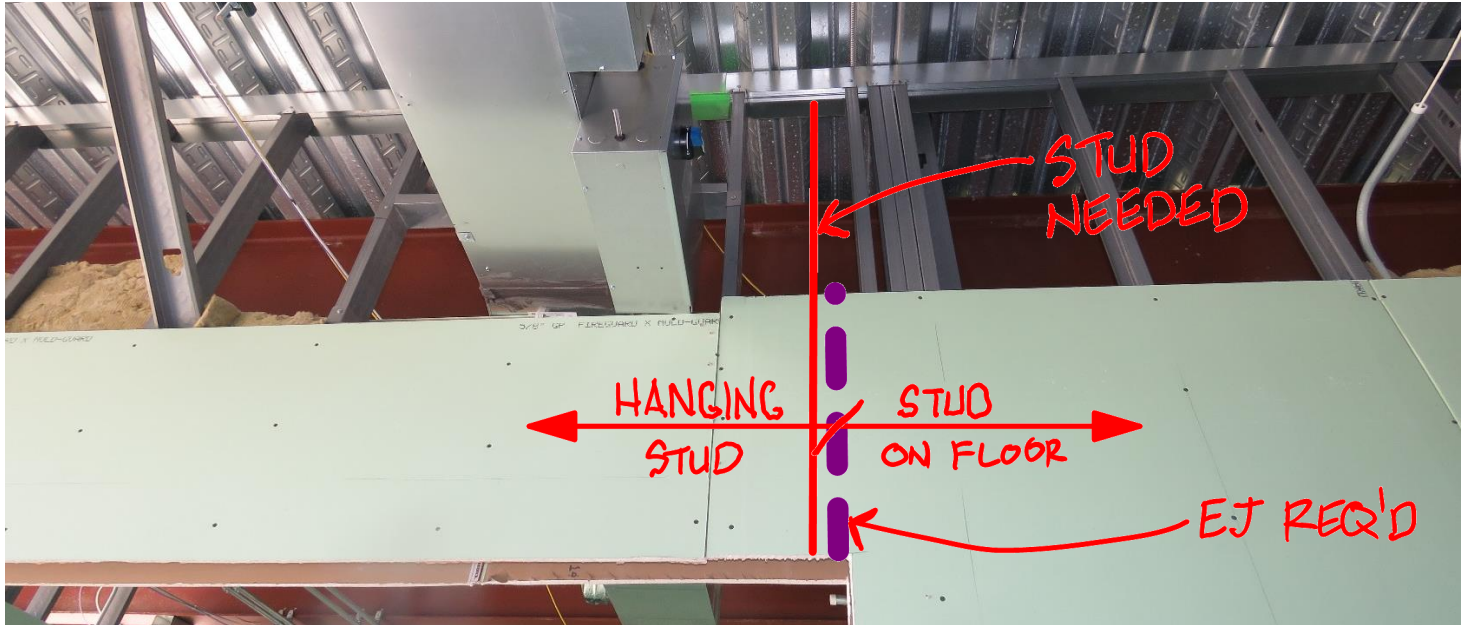




**When we install interior framing in a window condition or demountable partitions, and when a header is not practical...the framing members will be hanging off the floor above and the adjacent jamb is resting on the concrete. We have a differential movement condition, where the wall above the window/ demountable partitions is moving with the floor above and the adjacent jamb is moving with the floor below.**



**In these conditions, we need to install an EJ in the framing (*stud on either side*) and sheathing at the jamb.**

**\*Note –When a window has a header to the jamb – no EJ is needed**

**Talk to your interior framing Architect & subcontractor before starting the work**

